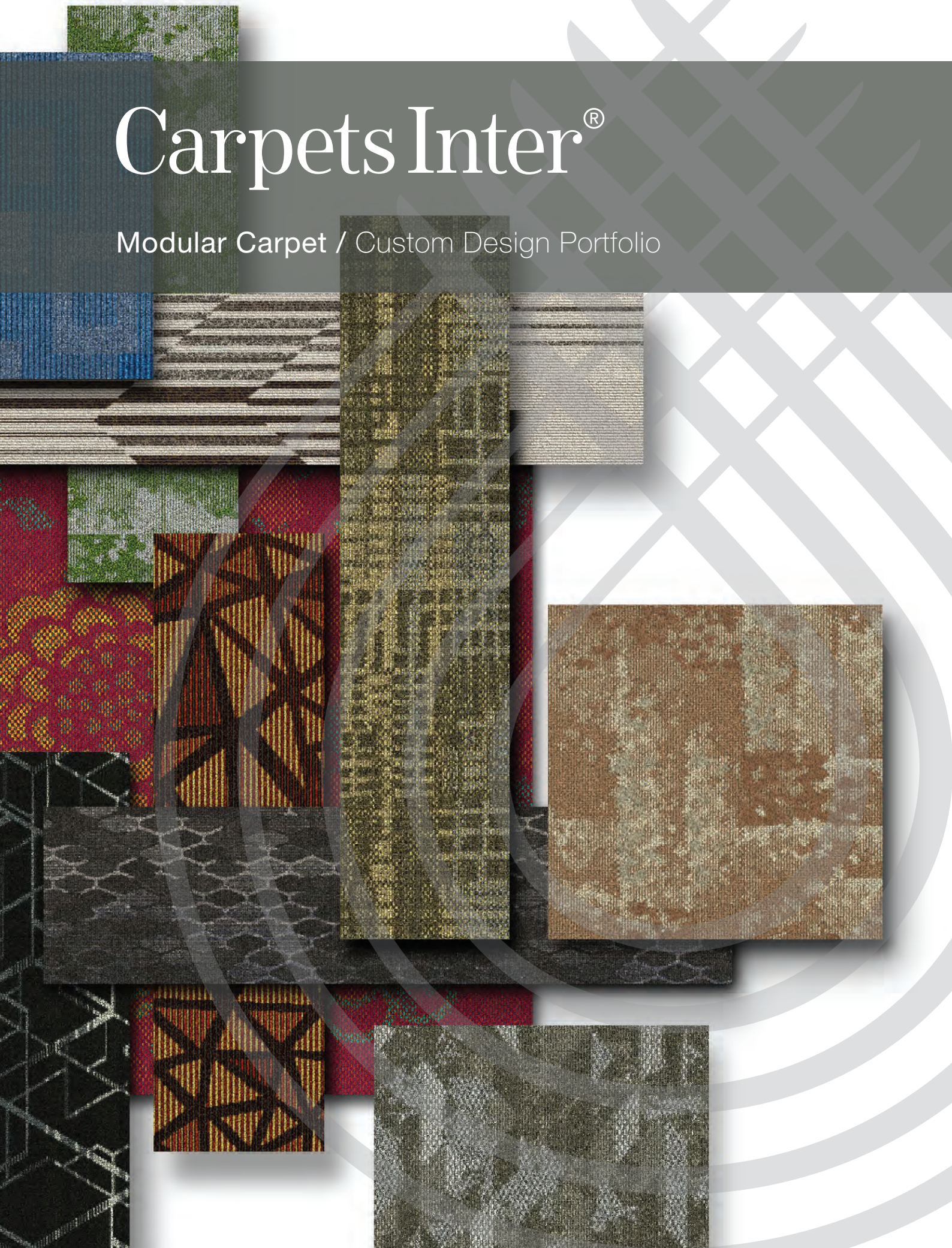


Carpets Inter[®]

Modular Carpet / Custom Design Portfolio





Mida Resort, Kanjanaburi



Border Express Tullamarine



ABC Tech Ltd., Bangkok



PTT International Co., Ltd.



United State Agency International Development (USAID)



Central West Gate



Tongtara Riverview Hotel

CI Carpet Tile / Custom Design Portfolio

The Design Portfolio features a wide range of Custom design inspirations created by our in-house design team to best suit modular carpet tile installations. The portfolio will assist in developing a custom color and/or pattern combination perfectly suited to the Architect/Designer's interior concept.

How to use the Portfolio

Upon selection, please contact your local Carpets Inter Representative who will assist you accordingly. If you have a particular color reference liked from one of our standard collections, we will match it accordingly, otherwise you may pass any material color references to us to match by using our nearest standard Solution Dye Yarn Fibers.

Once received by our Design Studio, we will prepare a computer-generated design simulation for pre-approval, at which point you may indicate which yarn color (i.e., Yarn A, Yarn B, etc.) goes in which position within the design.

After approval a non-quality M-Tuft sample will be provided within 10 working days for color and textural pattern review.

Tile Sizes

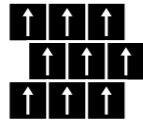
Most designs are offered in either of our two standard sizes: 50cm x 50cm and 25cm x 100cm. If the selected design is only featured in one size, that's because we don't think the design lends itself to any other size.

We do have the capability to manufacture modules @ 60cm x 60cm, 50cm x 100cm, 91cmx91cm and 100cm x 100cm, although again not all designs shown lend themselves to the larger sizes, such we would aim to adjust accordingly to suit each individual project.

Tip Shearing

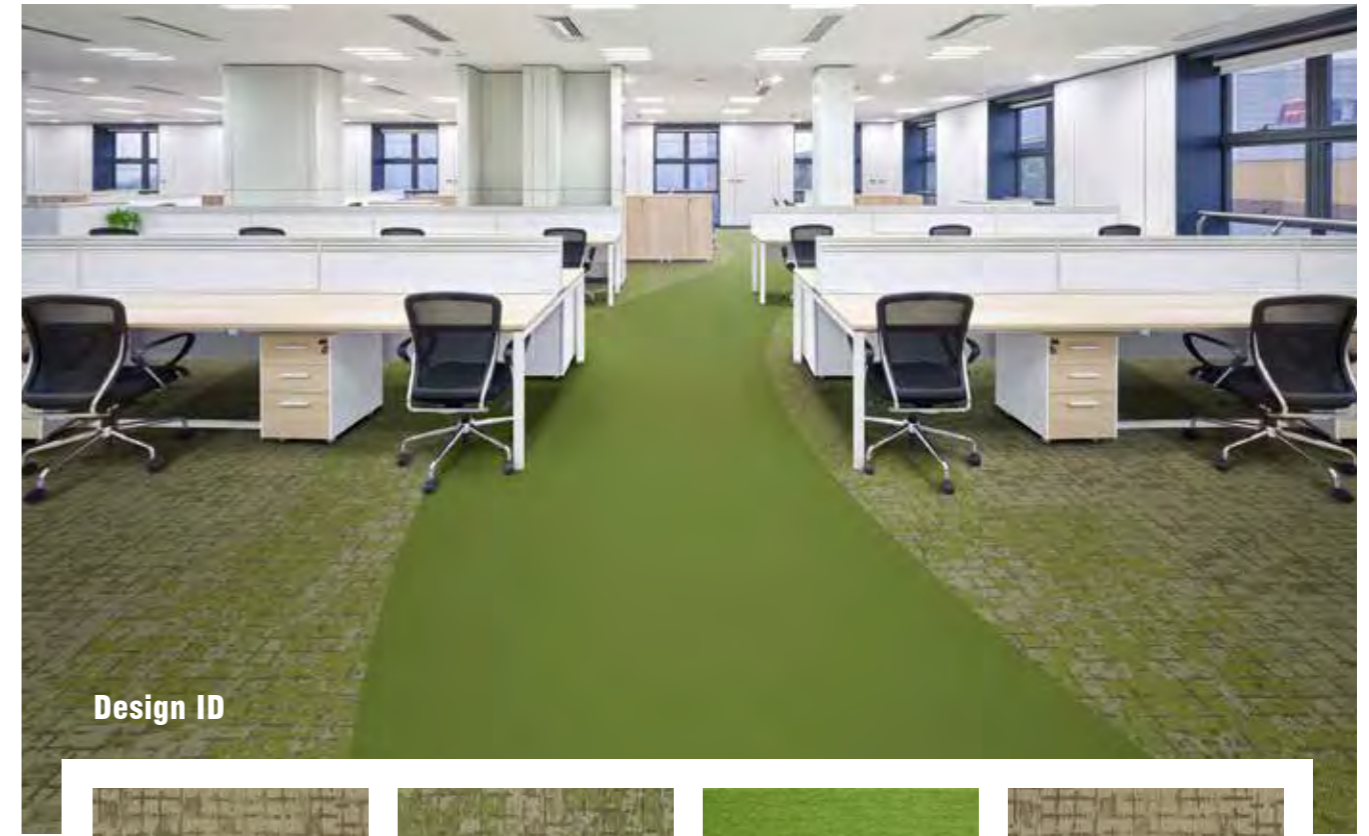
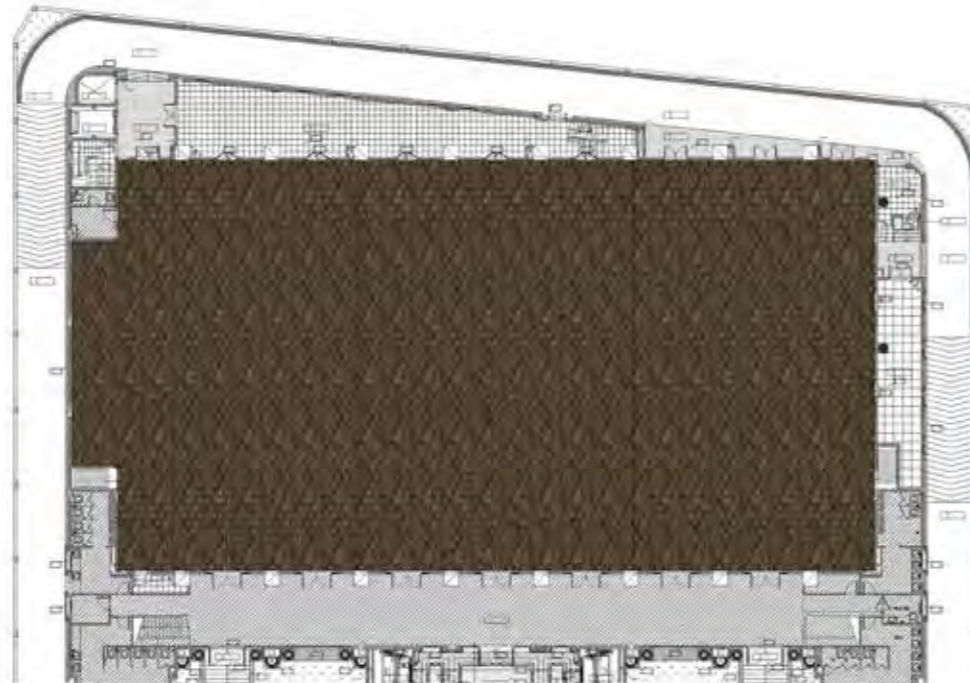
To create an additional level of pattern sophistication, some high/low Loop Pile textures can be 'tip-sheared'. This process creates a darker 'shade' of the single yarn color for two-tonal effect. Not all designs can be tip-sheared and the maximum 'tip-shearing' is < 40% depending on the design.

All designs in the brochure are custom-made to order. Selecting a custom design requires a nominal minimum order quantity of not less than 1000m² per single item. Please consult your local Carpets Inter representative for more information on creating a unique interior aesthetic....



Horizontal Brick

Design ID
64373B



Design ID



64635



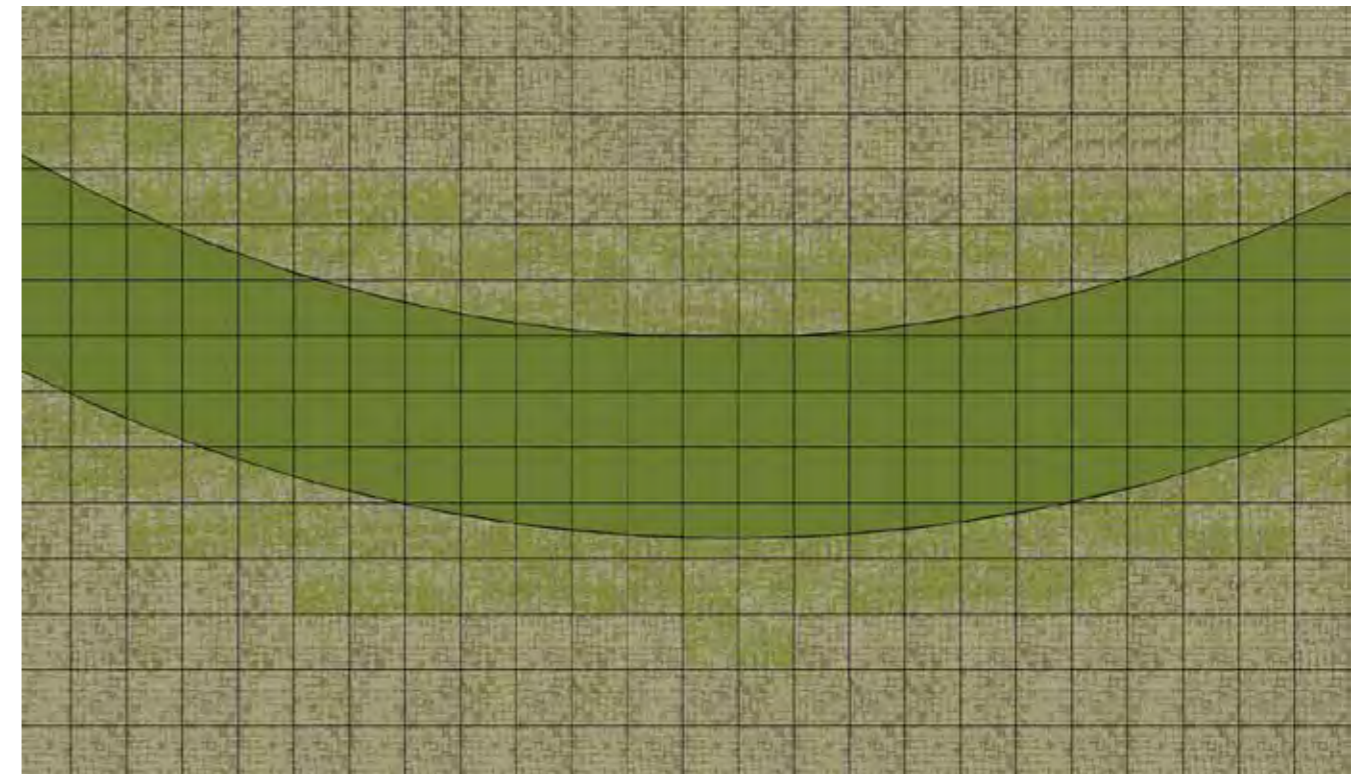
64634A

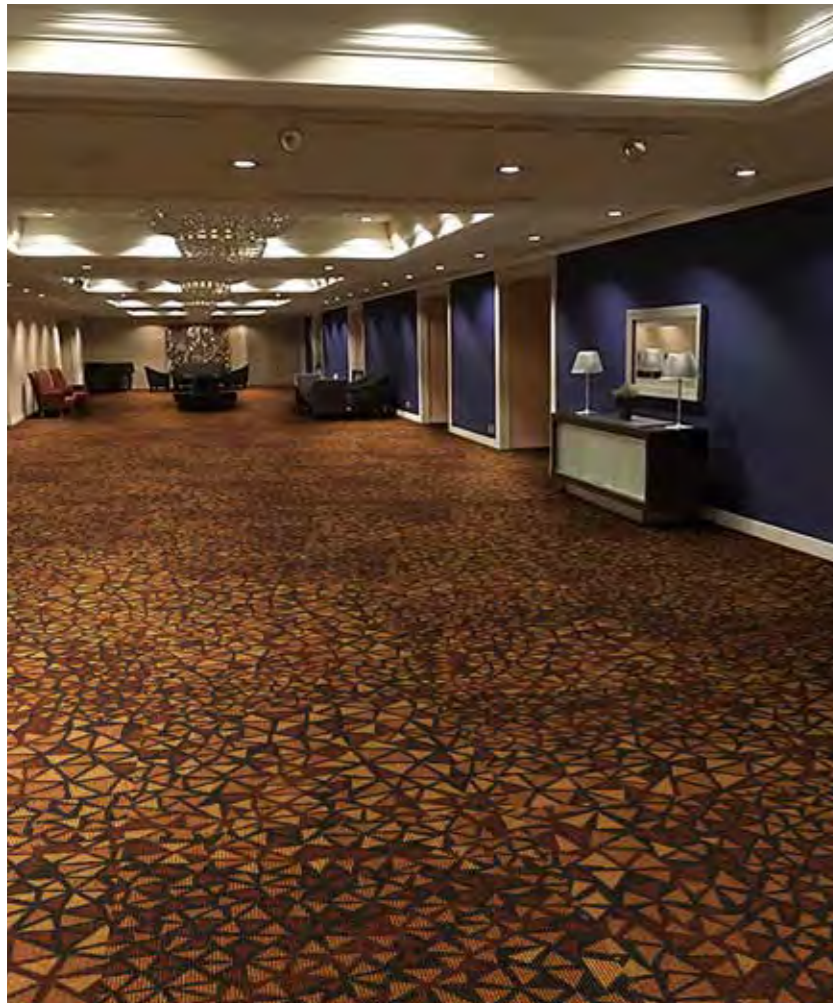


Key SM 09

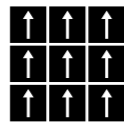
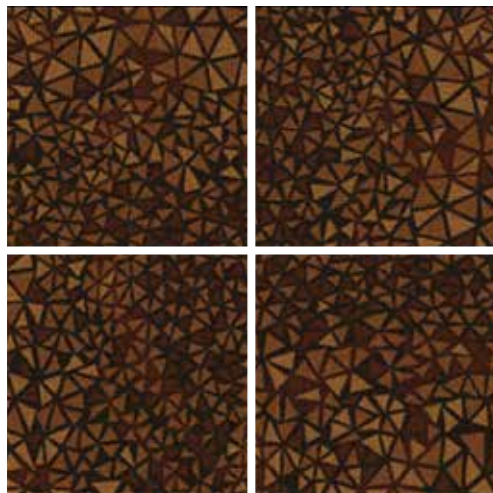


64636





Design ID
62543



Monolithic



Design ID
INNO1A





Random Vertical Brick

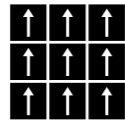


Design ID

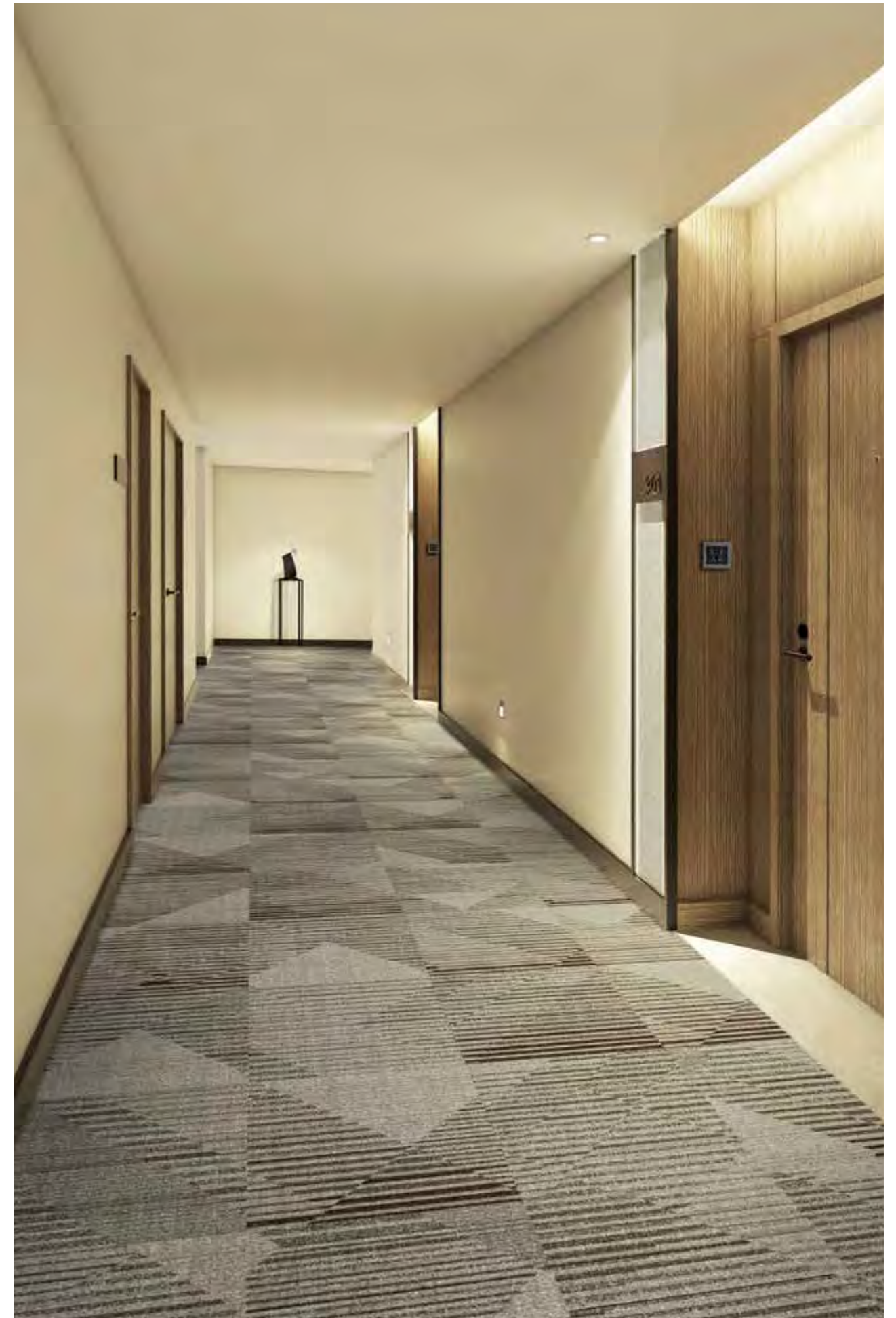
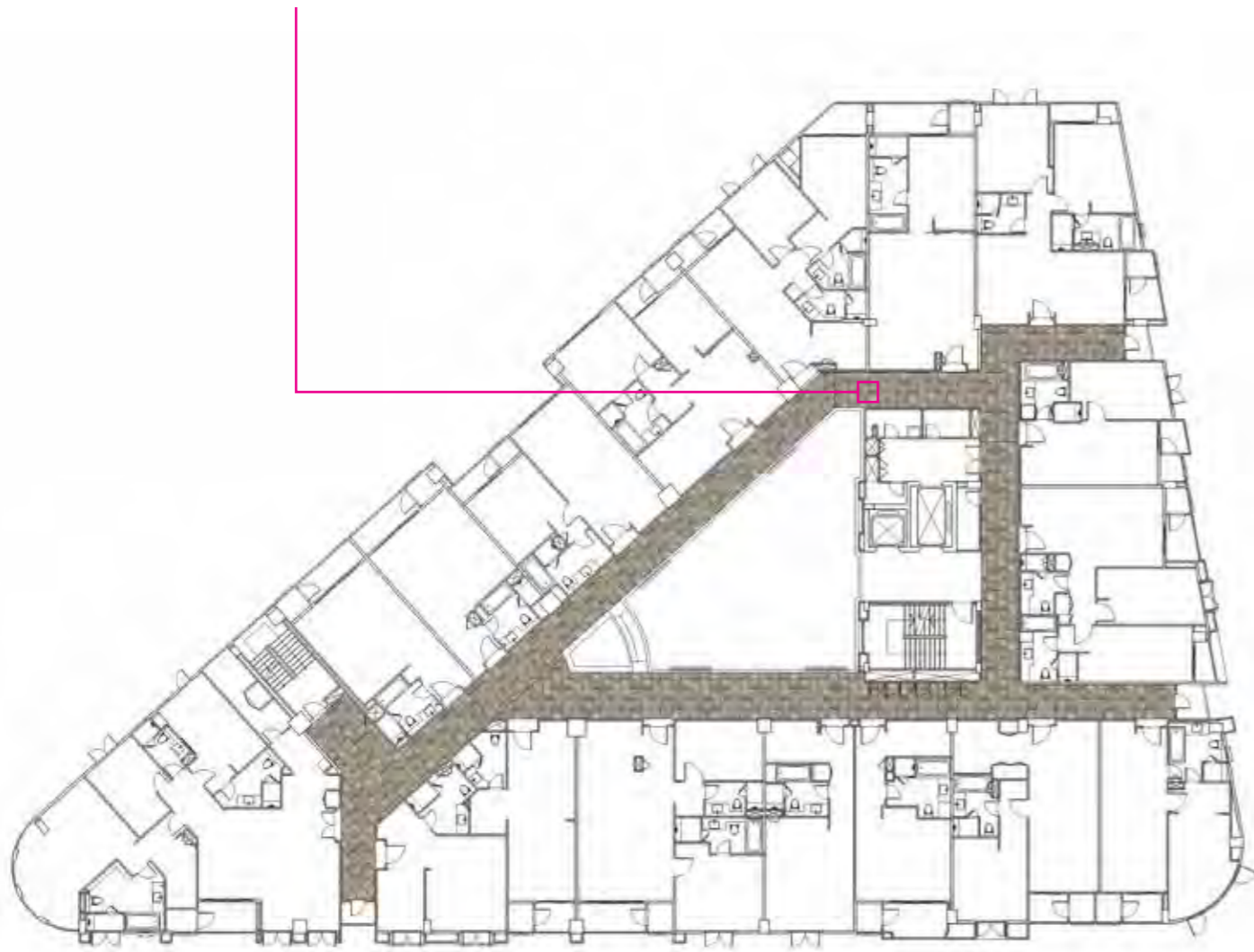
617461



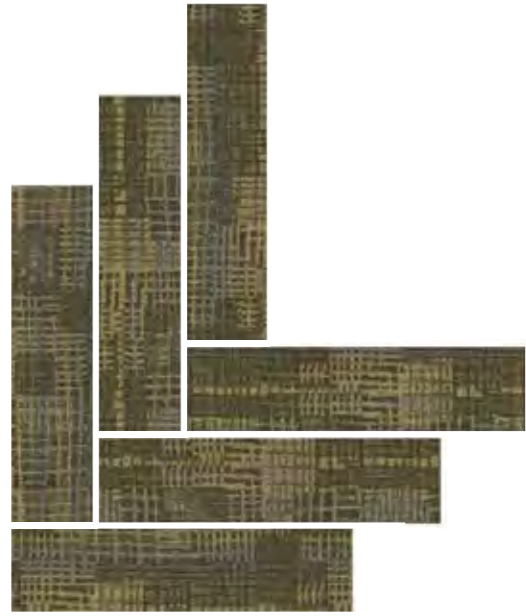
Design ID
64624B



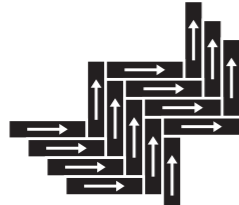
Monolithic



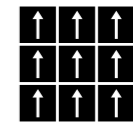
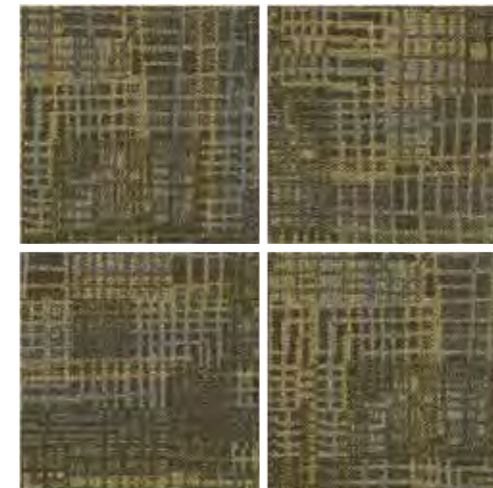
Design ID
59193



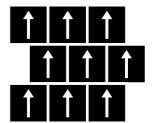
Vertical Brick



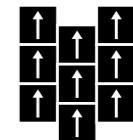
Herringbone



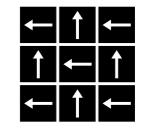
Monolithic



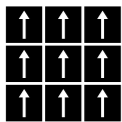
Horizontal Brick



Vertical Brick

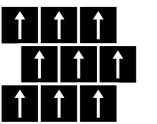


Checkerboard

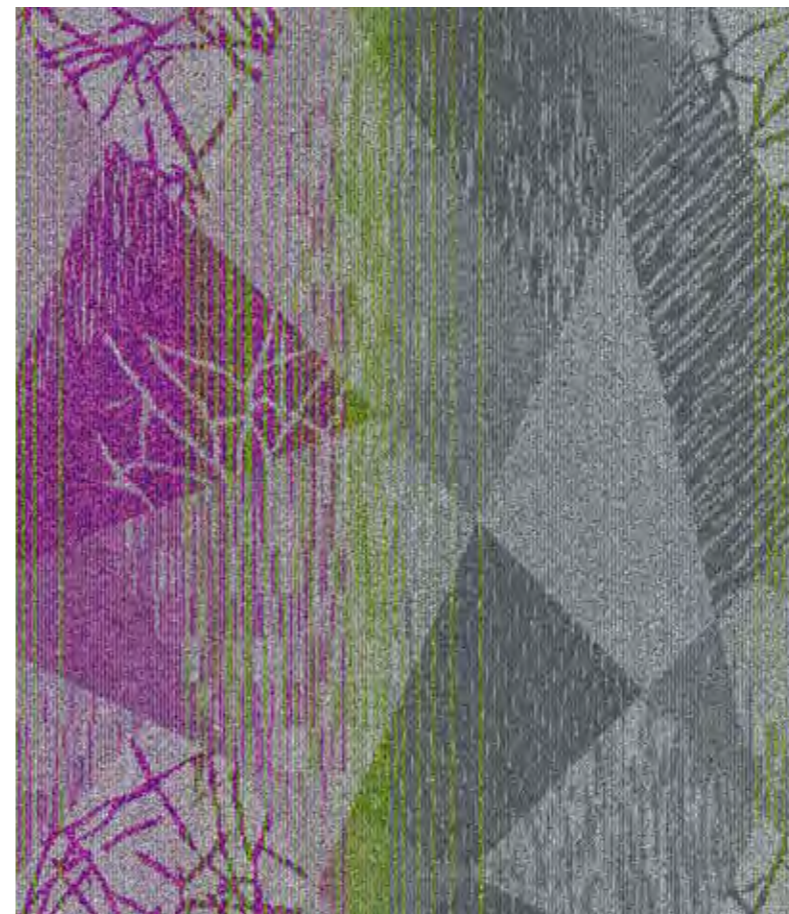


Monolithic

Design ID
62013



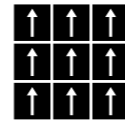
Horizontal Brick



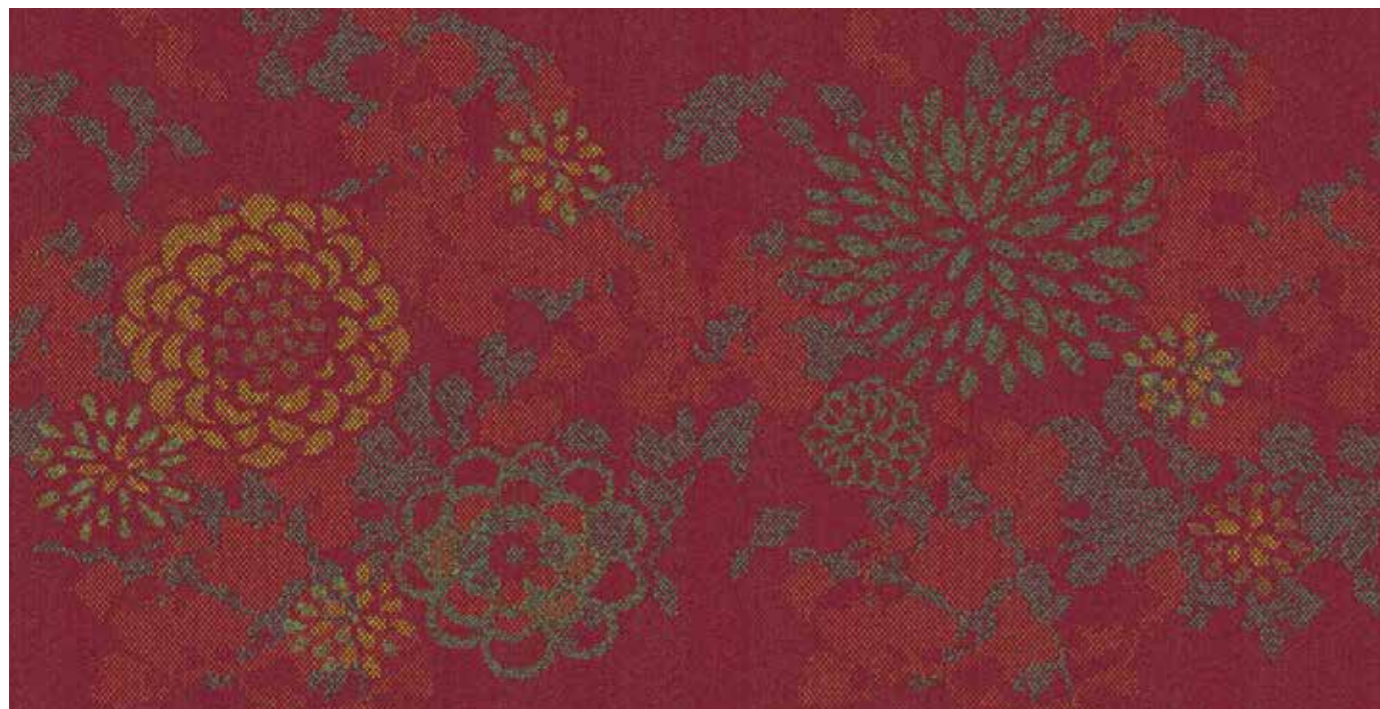
Design ID
63961



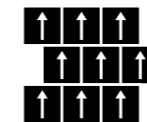
Design ID
62527H



Monolithic



Design ID
64740

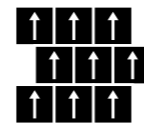
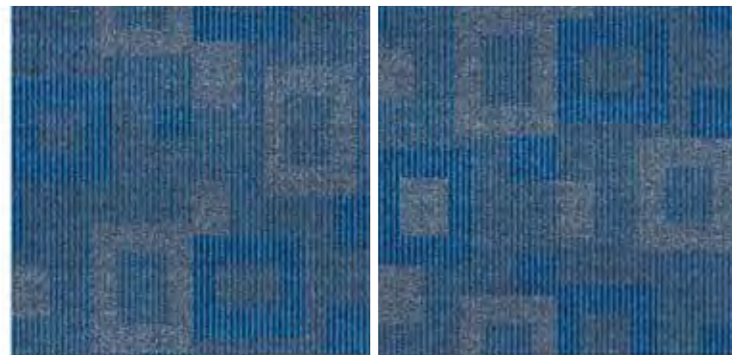
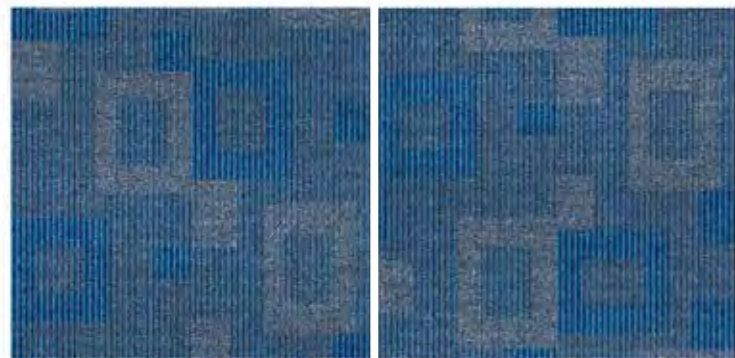


Horizontal Brick

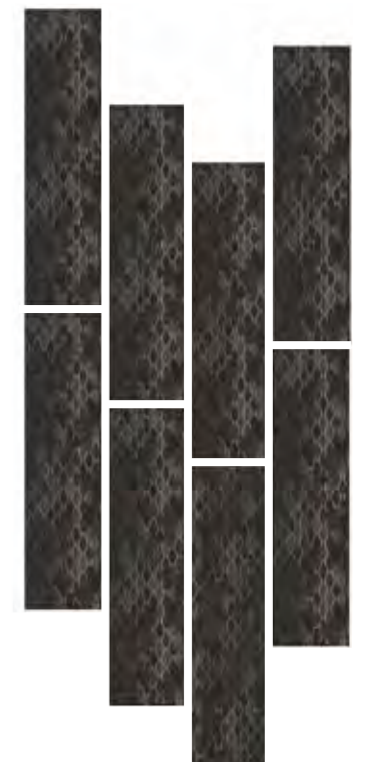
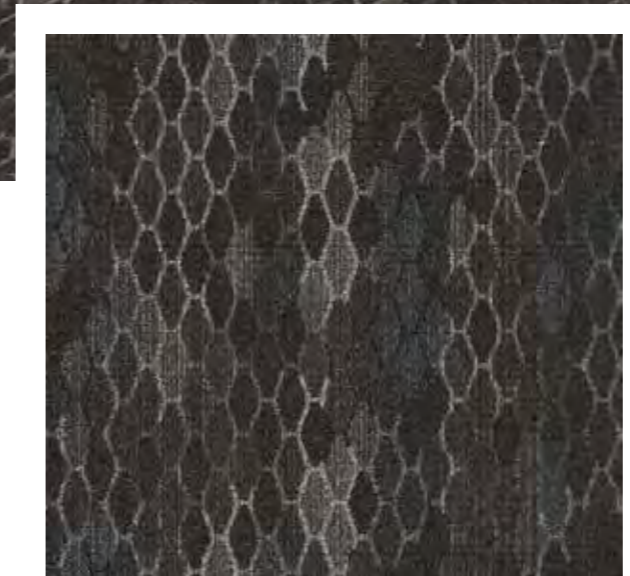


Design ID

59682A



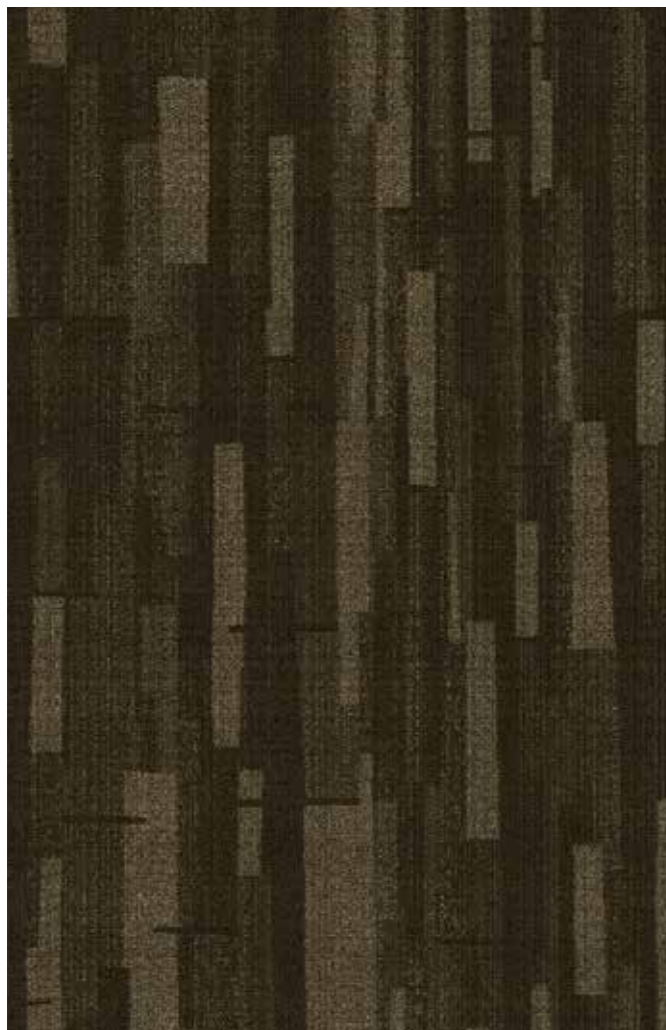
Horizontal Brick



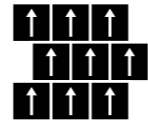
Random Vertical Brick

Design ID

62153



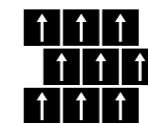
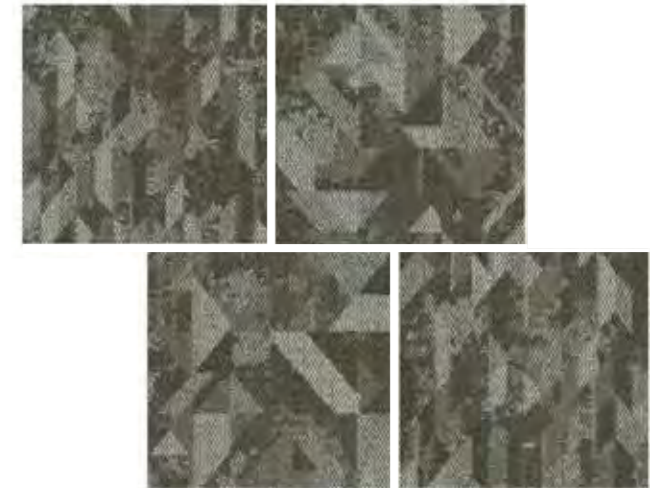
Design ID
63059



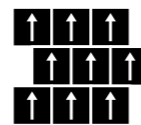
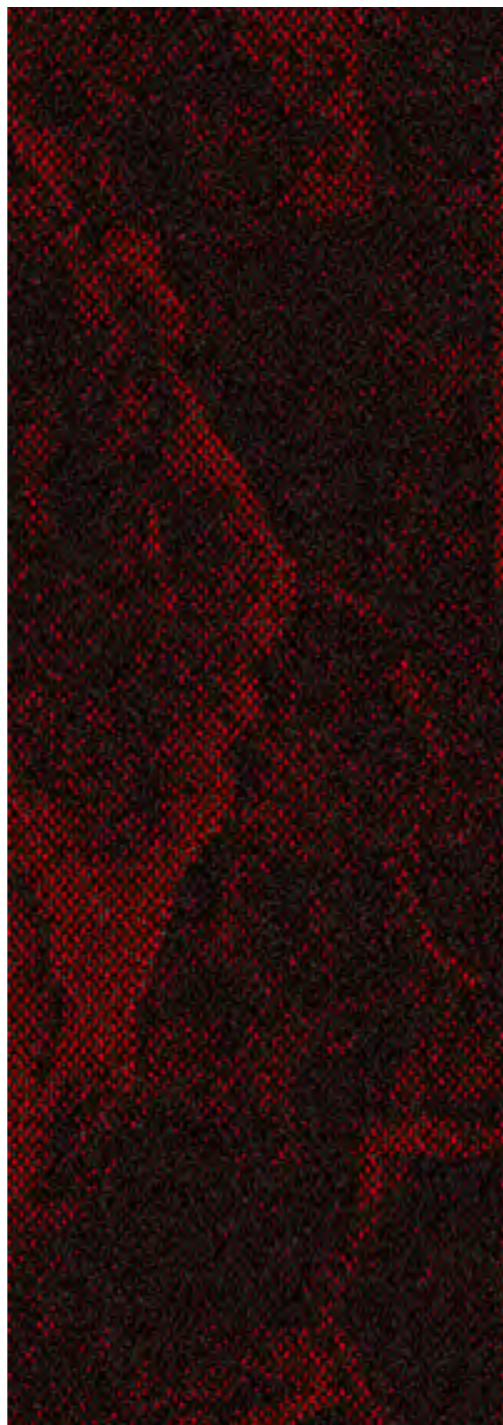
Horizontal Brick



Design ID
64554C



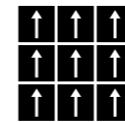
Horizontal Brick



Horizontal Brick

Design ID
64475

Design ID
64551



Monolithic



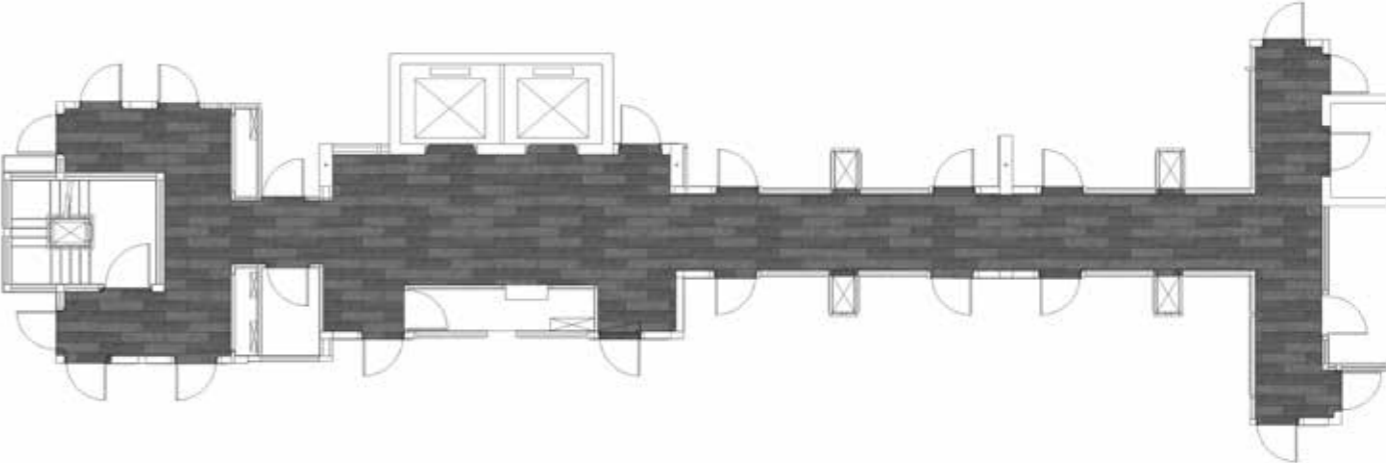
Design ID
Shimmer LS01

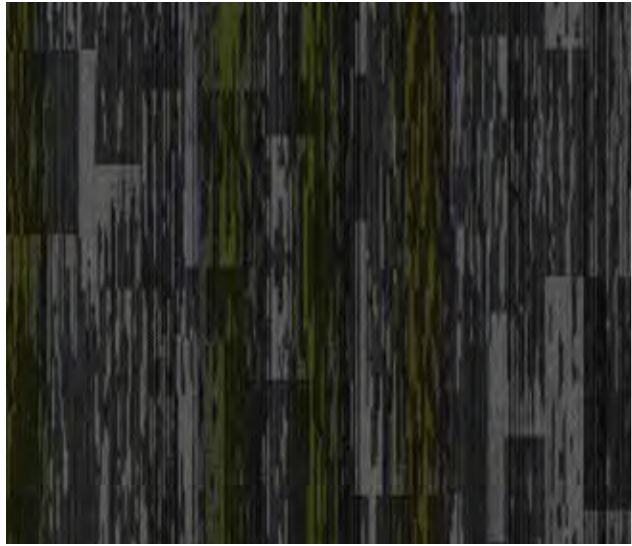


Vertical Brick



Design ID
Beam LB05

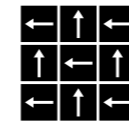




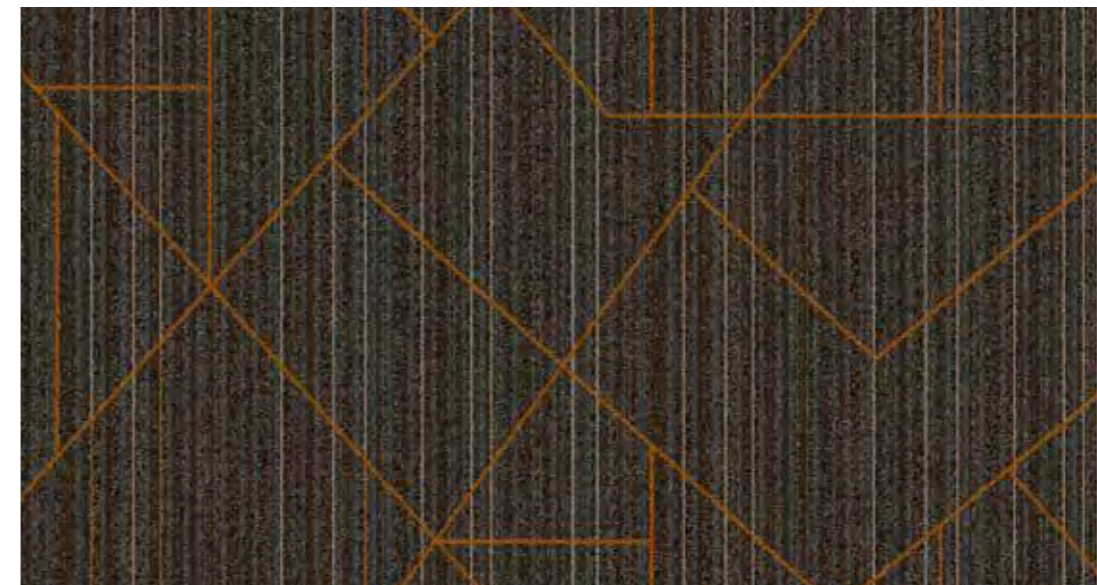
Design ID
63276A



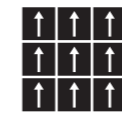
Vertical Brick



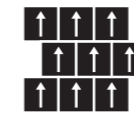
Checkerboard



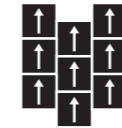
Design ID
64457A



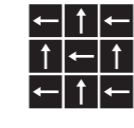
Monolithic



Horizontal Brick



Vertical Brick



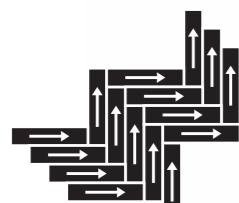
Checkerboard



Design ID
64772A



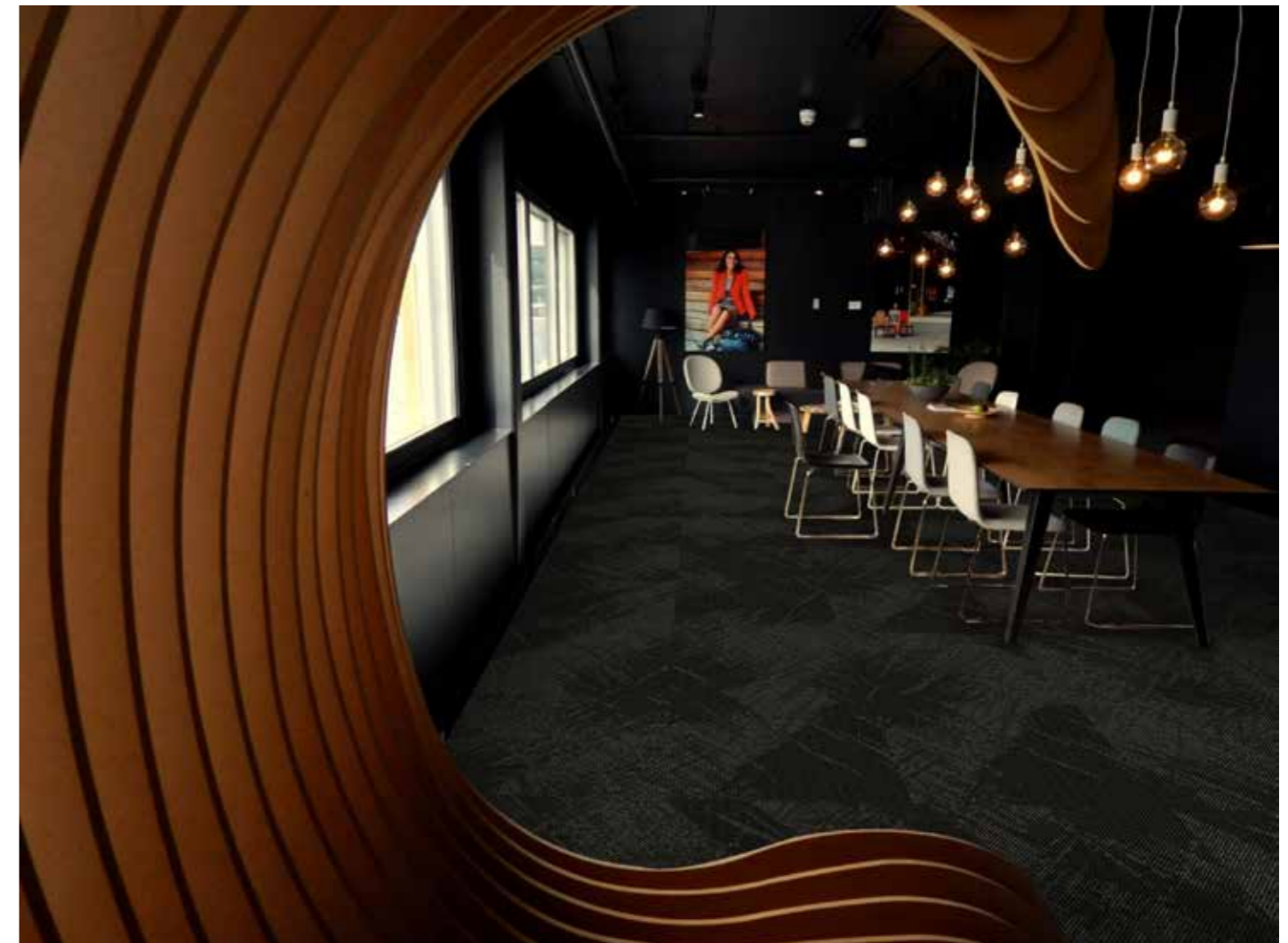
Vertical Brick

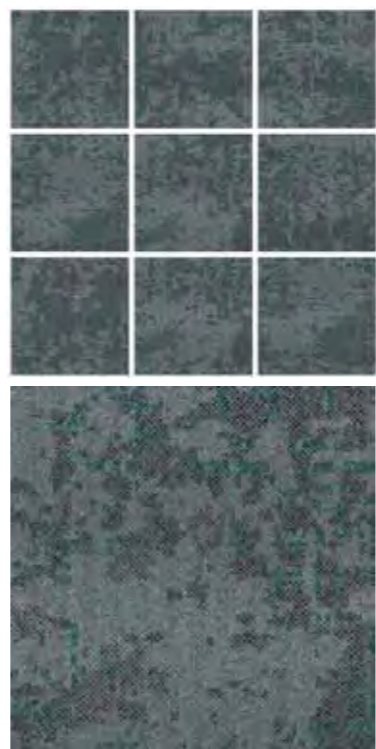


Herringbone

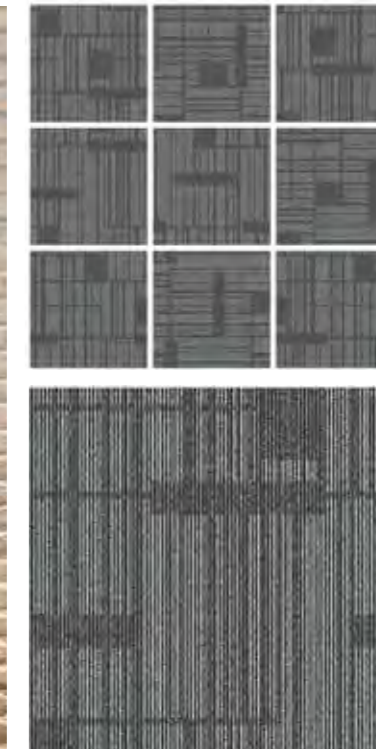
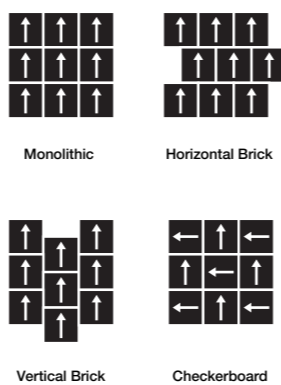


Design ID
62195B
CarpetsInter®

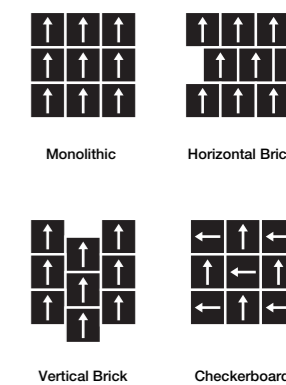


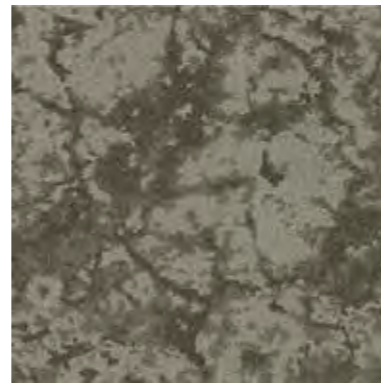
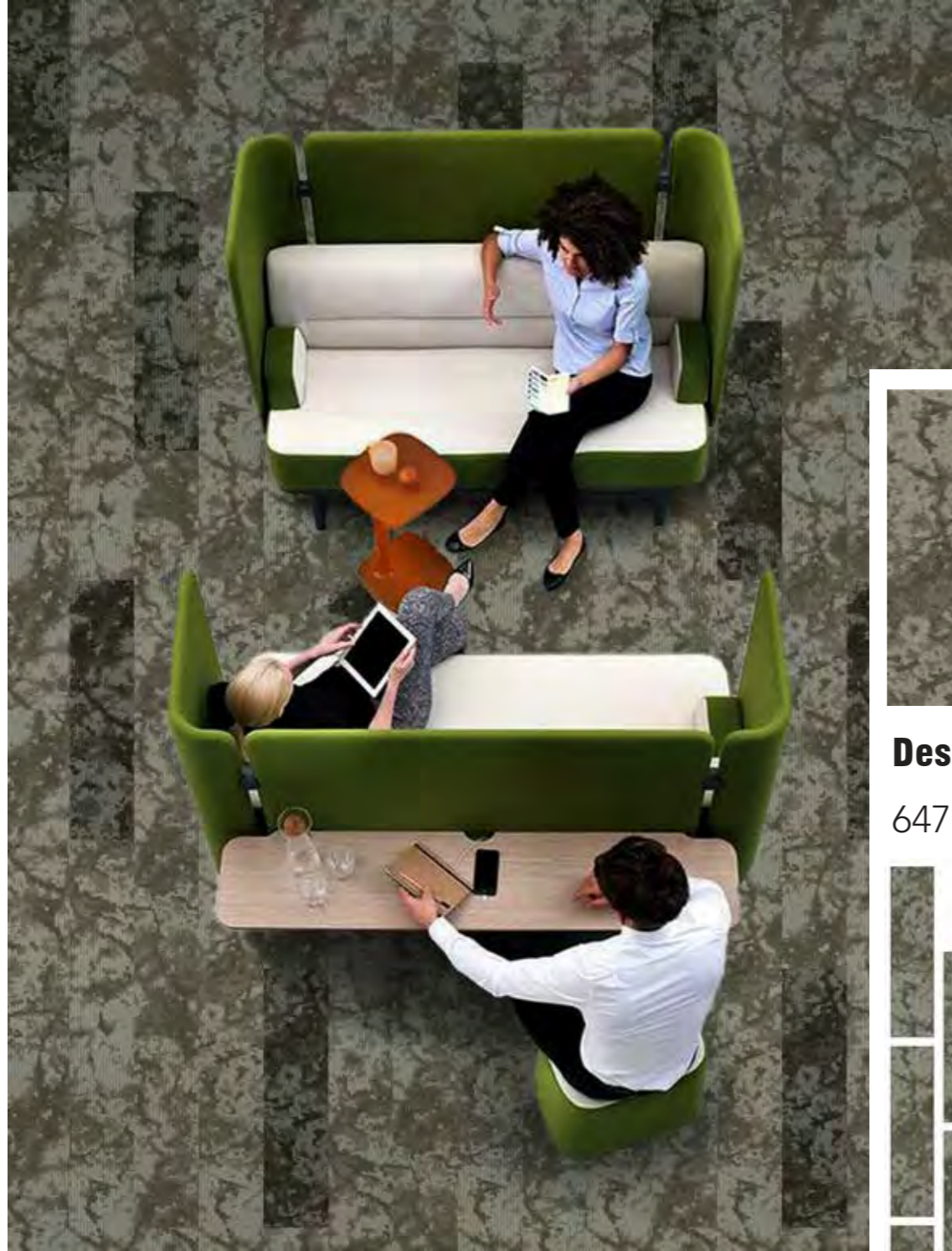


Design ID
64965



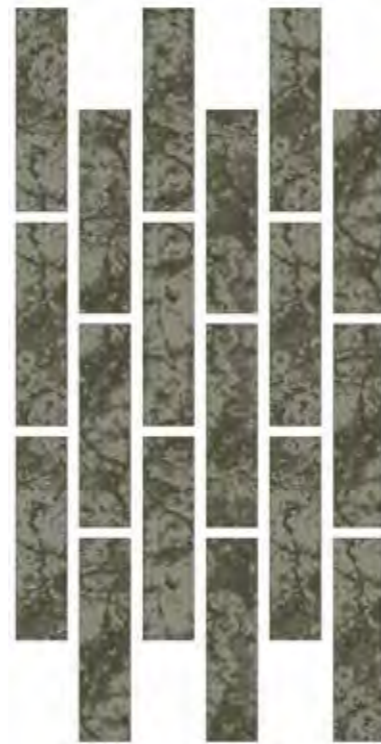
Design ID
64967



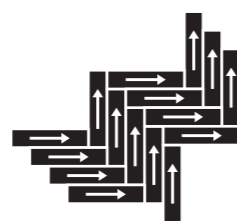


Design ID

64774A



Vertical Brick



Herringbone

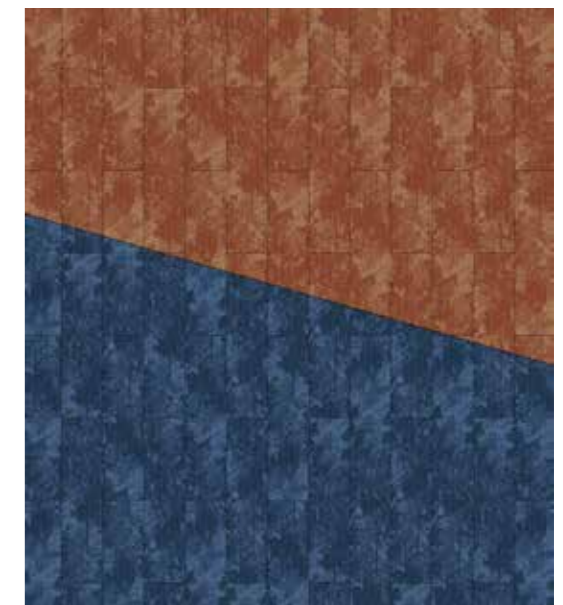


Design ID

64756A



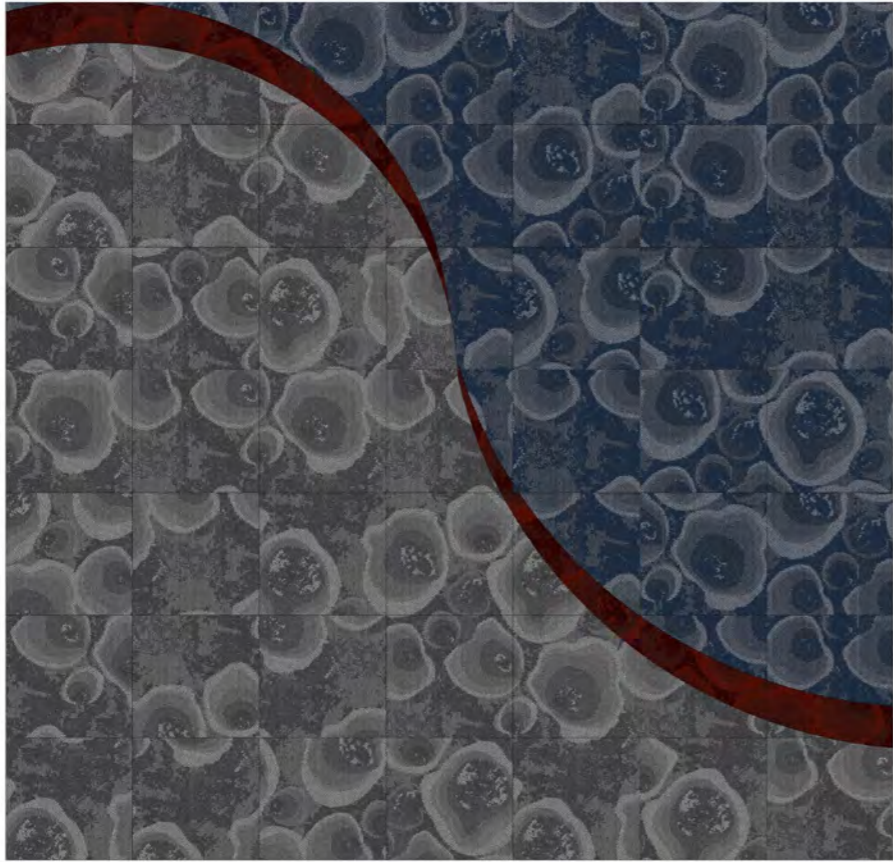
Vertical Brick



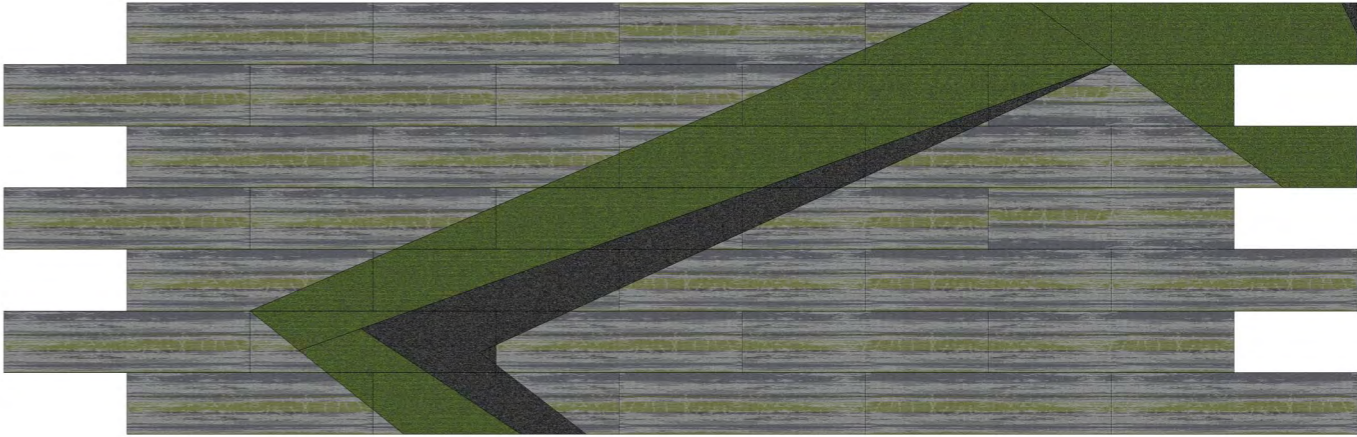
Design ID

64757A

Design ID
64854B-C-E

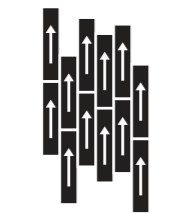


Design ID
63496
FL04
FL10





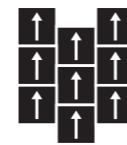
Design ID
64511



Random Vertical Brick



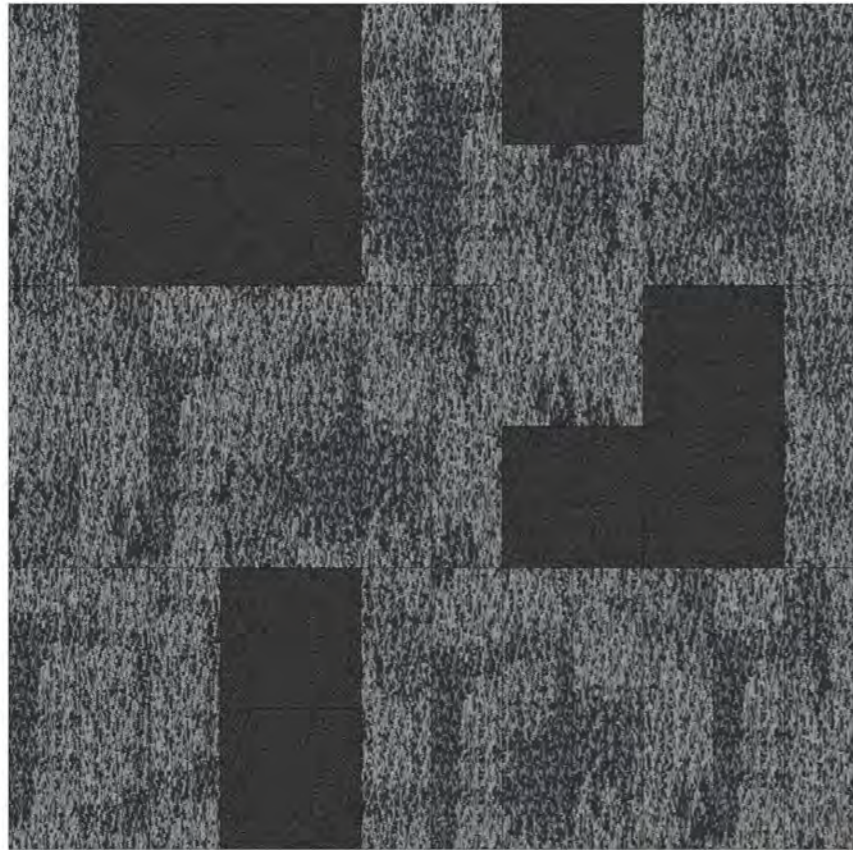
Design ID
64899C



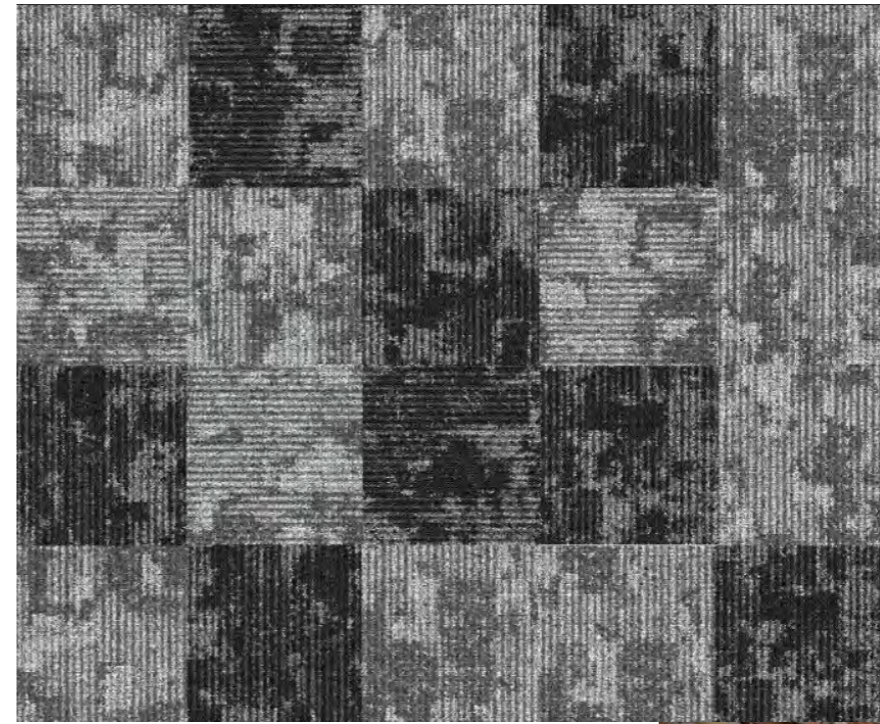
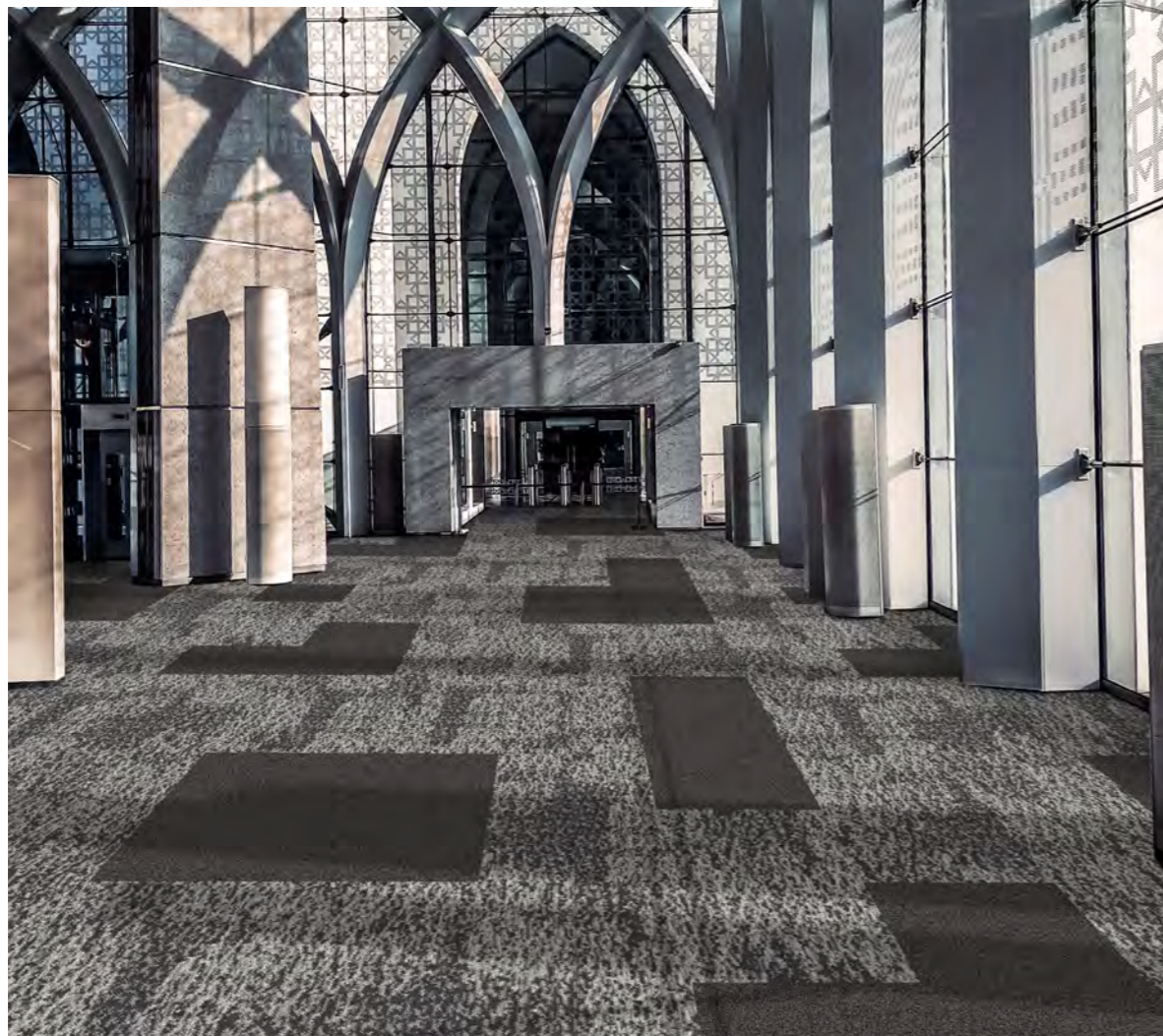
Vertical Brick



Design ID
Color Symphony SM06



Design ID
65206 and FL04



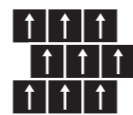
Design ID
Wall Art





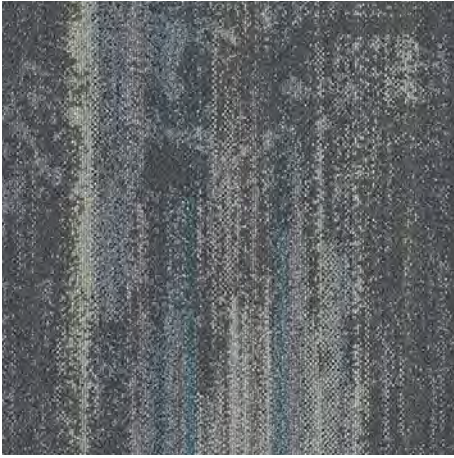
Design ID

Scatter



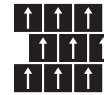
Horizontal Brick



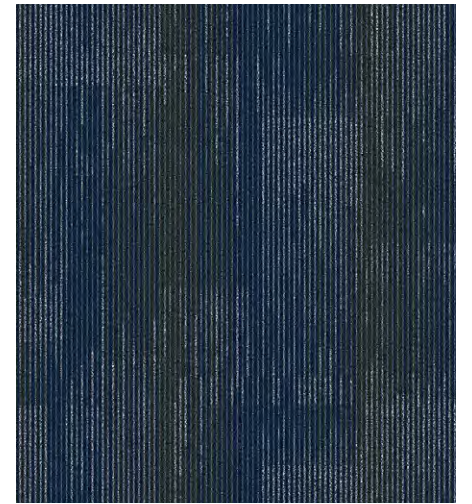


Checkerboard

Design ID
FM053639P001



Horizontal Brick



Design ID
MM051747P002

Page
4



Design ID
64373B

Tile Size	: 50 x 50 cm.
Construction	: 1/12 Gauge Multilevel Loop Pattern

Page
5



Design ID
64634A

Tile Size	: 50 x 50 cm., 25 x 100 cm.
Construction	: 1/12 Gauge Multilevel Loop Pattern

Page
5



Design ID
64635

Tile Size	: 50 x 50 cm., 25 x 100 cm.
Construction	: 1/12 Gauge Multilevel Loop Pattern

Page
5



Design ID
64636

Tile Size	: 50 x 50 cm., 25 x 100 cm.
Construction	: 1/12 Gauge Multilevel Loop Pattern

Page
5



Design ID
Key SM 09

Tile Size	: 50 x 50 cm., 25 x 100 cm.
Construction	: 1/12 Gauge Multilevel Loop Pattern

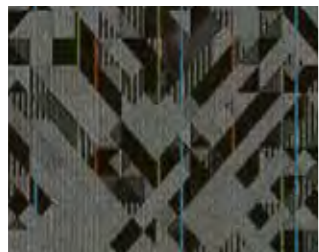
Page
6



Design ID
62543

Tile Size	: 100 x 100 cm.
Construction	: 1/12 Gauge Multilevel Loop Pattern

Page
7



Design ID
INNO1A

Tile Size	: 50 x 50 cm.
Construction	: 1/12 Gauge Multilevel Loop Pattern

Page
8-9



Design ID
61746I

Tile Size	: 50 x 50 cm., 25 x 100 cm.
Construction	: 1/12 Gauge Multilevel Loop Pattern

Page
10-11



Design ID
64624B

Tile Size	: 50 x 50 cm.
Construction	: 1/12 Gauge Multilevel Loop Pattern

Page
12-13



Design ID
59193

Tile Size	: 50 x 50 cm., 25 x 100 cm.
Construction	: 1/12 Gauge Multilevel Loop Pattern

Page
14



Design ID
62013

Tile Size	: 100 x 100 cm.
Construction	: 1/12 Gauge Multilevel Loop Pattern

Page
15



Design ID
63961

Tile Size	: 50 x 50 cm., 100 x 100 cm.
Construction	: 1/12 Gauge Multilevel Loop Pattern

Page
16



Design ID
62527H

Tile Size	: 100 x 100 cm.
Construction	: 1/12 Gauge Multilevel Loop Pattern

Page
17



Design ID
64740

Tile Size	: 50 x 50 cm., 100 x 100 cm.
Construction	: 1/12 Gauge Multilevel Loop Pattern

Page
18



Design ID
59682A

Tile Size : 50 x 50 cm.
Construction : 1/12 Gauge
Multilevel Loop Pattern

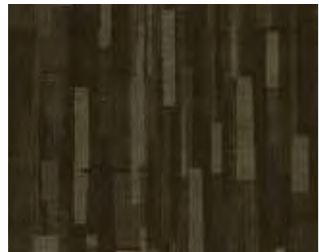
Page
19



Design ID
62153

Tile Size : 50 x 50 cm., 25 x 100 cm.
Construction : 1/12 Gauge
Multilevel Loop Pattern

Page
20



Design ID
63059

Tile Size : 100 x 100 cm.
Construction : 1/12 Gauge
Multilevel Loop Pattern

Page
21



Design ID
64554C

Tile Size : 50 x 50 cm.
Construction : 1/12 Gauge
Multilevel Loop Pattern / Tipshear

Page
22



Design ID
64475

Tile Size : 50 x 50 cm.
Construction : 1/12 Gauge
Multilevel Loop Pattern

Page
23



Design ID
64551

Tile Size : 100 x 100 cm.
Construction : 1/12 Gauge
Multilevel Loop Pattern

Page
24



Design ID
Shimmer LS01

Tile Size : 25 x 100 cm.
Construction : 1/12 Gauge
Multilevel Loop Pattern

Page
25



Design ID
Beam LB05

Tile Size : 25 x 100 cm.
Construction : 1/12 Gauge
Multilevel Loop Pattern

Page
26



Design ID
63276A

Tile Size : 25 x 100 cm.
Construction : 1/12 Gauge
Multilevel Loop Pattern

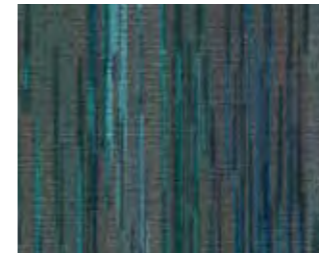
Page
27



Design ID
64457A

Tile Size : 50 x 50 cm.
Construction : 1/12 Gauge
Multilevel Loop Pattern

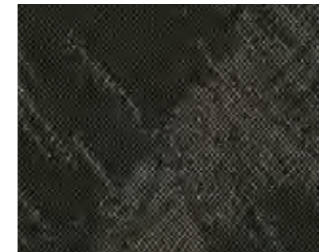
Page
28



Design ID
62195B

Tile Size : 25 x 100 cm.
Construction : 1/12 Gauge
Multilevel Loop Pattern

Page
29



Design ID
64772A

Tile Size : 50 x 50 cm.
Construction : 1/12 Gauge
Multilevel Loop Pattern

Page
30



Design ID
64965

Tile Size : 50 x 50 cm.
Construction : 1/12 Gauge
Multilevel Loop Pattern

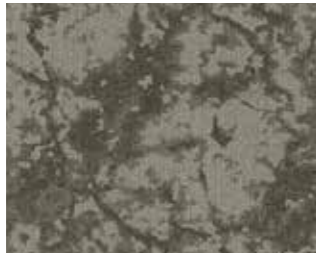
Page
31



Design ID
64967

Tile Size : 50 x 50 cm.
Construction : 1/12 Gauge
Multilevel Loop Pattern

Page
32



Design ID
64774A

Tile Size	: 25 x 100 cm.
Construction	: 1/12 Gauge Multilevel Loop Pattern

Page
33



Design ID
64756A

Tile Size	: 25 x 100 cm.
Construction	: 1/12 Gauge Multilevel Loop Pattern

Page
33



Design ID
64757A

Tile Size	: 25 x 100 cm.
Construction	: 1/12 Gauge Multilevel Loop Pattern

Page
34



Design ID
64854B

Tile Size	: 50 x 50 cm.
Construction	: 1/12 Gauge Multilevel Loop Pattern

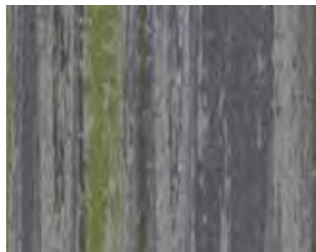
Page
34



Design ID
64854C

Tile Size	: 50 x 50 cm.
Construction	: 1/12 Gauge Multilevel Loop Pattern

Page
35



Design ID
63496

Tile Size	: 25 x 100 cm
Construction	: 1/12 Gauge Multilevel Loop Pattern

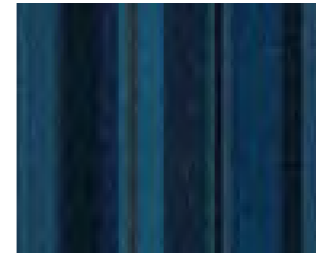
Page
36



Design ID
64511

Tile Size	: 25 x 100 cm.
Construction	: 1/12 Gauge Multilevel Loop Pattern

Page
37



Design ID
64899C

Tile Size	: 50 x 50 cm.
Construction	: 1/12 Gauge Multilevel Loop Pattern

Page
37



Design ID
Color Symphony
SM06

Tile Size	: 50 x 50 cm.
Construction	: 1/12 Gauge Multilevel Loop Pattern

Page
38



Design ID
65206

Tile Size	: 25 x 100 cm .
Construction	: 1/12 Gauge Multilevel Loop Pattern

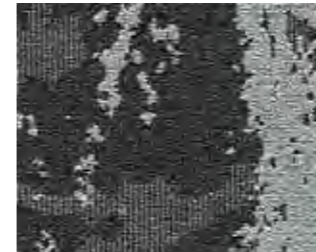
Page
39



Design ID
Wall Art

Tile Size	: 50 x 50 cm.
Construction	: 1/12 Gauge Multilevel Loop Pattern

Page
40



Design ID
Scatter

Tile Size	: 50 x 50 cm.
Construction	: 1/12 Gauge Multilevel Loop Pattern

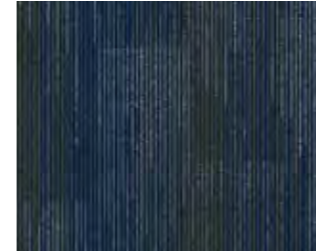
Page
42



Design ID
FM053639P001

Tile Size	: 50 x 50 cm.
Construction	: 1/12 Gauge Multilevel Loop Pattern

Page
43



Design ID
MM051747P002

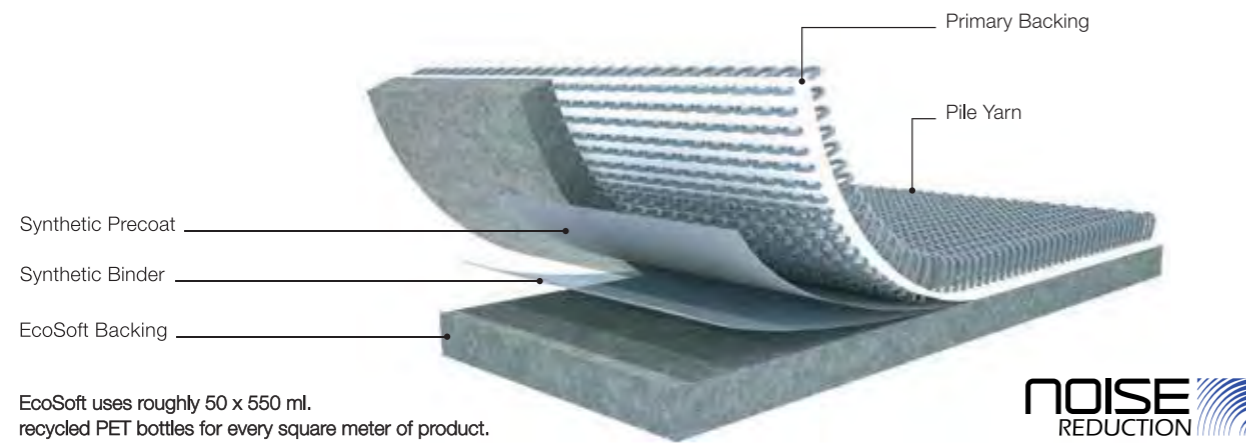
Tile Size	: 50 x 50 cm.
Construction	: 1/12 Gauge Multilevel Loop Pattern

We will RECYCLE OVER 1,000,000,000 discarded PLASTIC BOTTLES by 2025

EcoSoft®

Sustainable Performance and Value

EcoSoft® is made from 80% post-consumer material reengineered from millions of discarded drinking water bottles, plus 5 to 10% post-industrial recycled PET. This environmentally friendly backing not only meets all the stringent performance criteria required for modular carpet, but consistently outperforms conventional PVC and bitumen hard back, as well as urethane cushion back in terms of durability, underfoot comfort, acoustical propensity and indoor air quality.



EcoSoft uses roughly 50 x 550 ml. recycled PET bottles for every square meter of product.

EcoSoft® Outstanding Features

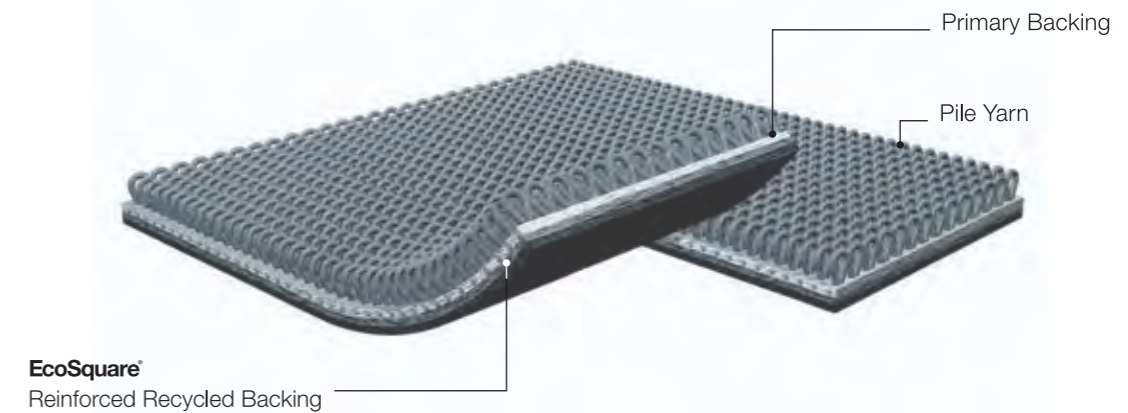
- > 85% recycled content backing
- > 100% recyclable
- > No PVC, Bitumen or Fiberglass content
- > Suitable for installation onto wet slab up to 99% RH
- > Superior Acoustical Propensity - outperforms hardback by 150% to 175% per Green Star IEQ10 internal noise level requirements
- > Excellent Dimensional Stability BS EN 986 less than 0.15%
- > Cushioning reduces wear and tear, fiber crush and user fatigue
- > EcoSoft® backed modular carpet product contributes up to 6 LEED points

In view of the superior properties outlined above, modular carpet with EcoSoft® backing is the ideal choice for Education facilities.

EcoSquare®

Sustainable Performance and Value

EcoSquare® is another step in Carpet Inter's ongoing Sustainability and Reclamation program, repurposing waste material into a recycled high performance modular carpet backing.



EcoSquare® Outstanding Features

- > 63.5% recycled content backing
- > 100% recyclable
- > Meets Greenstar best practice guidelines
- > Free of toxic plasticisers and stabilisers
- > Excellent Dimensional Stability BS EN 986 less than 0.15%
- > EcoSquare® backed modular carpet product contributes up to 5 LEED points

In view of the superior properties outlined above, modular carpet with EcoSquare® backing is the ideal choice for Education facilities.

